



### **ACCESS PANEL MANUFACTURING**

**Brooer** access Panels are Manufactured Under Brooer Metal Industries llc Provides complete range of Building material for Drywall, Ceiling and decoration Products across the Globe. We are one Partner to all solution.

#### **Brooer Access Panel with Gypsum Board!**

Are you looking for access panel or Push up doors with Gypsum Board for your Coming project? Our access panels Brings secure entrance points for crawlspace, plumbing or renovation jobs for your ceiling or drywall. They are engineered for a clean final finish and will last for a very long time. Access panels are useful in a wide range of commercial and residential locations. Another great benefit to these panels is they provide an aesthetically pleasing way to hide your cables, unsightly wires, and even water vales. It provides complete access to your ceiling and drywalls.

**Brooer** offers different types of Push Up door/panels in our inventory, including Normal access panels, Moisture Rated access Panels, fire rated Panels and more.

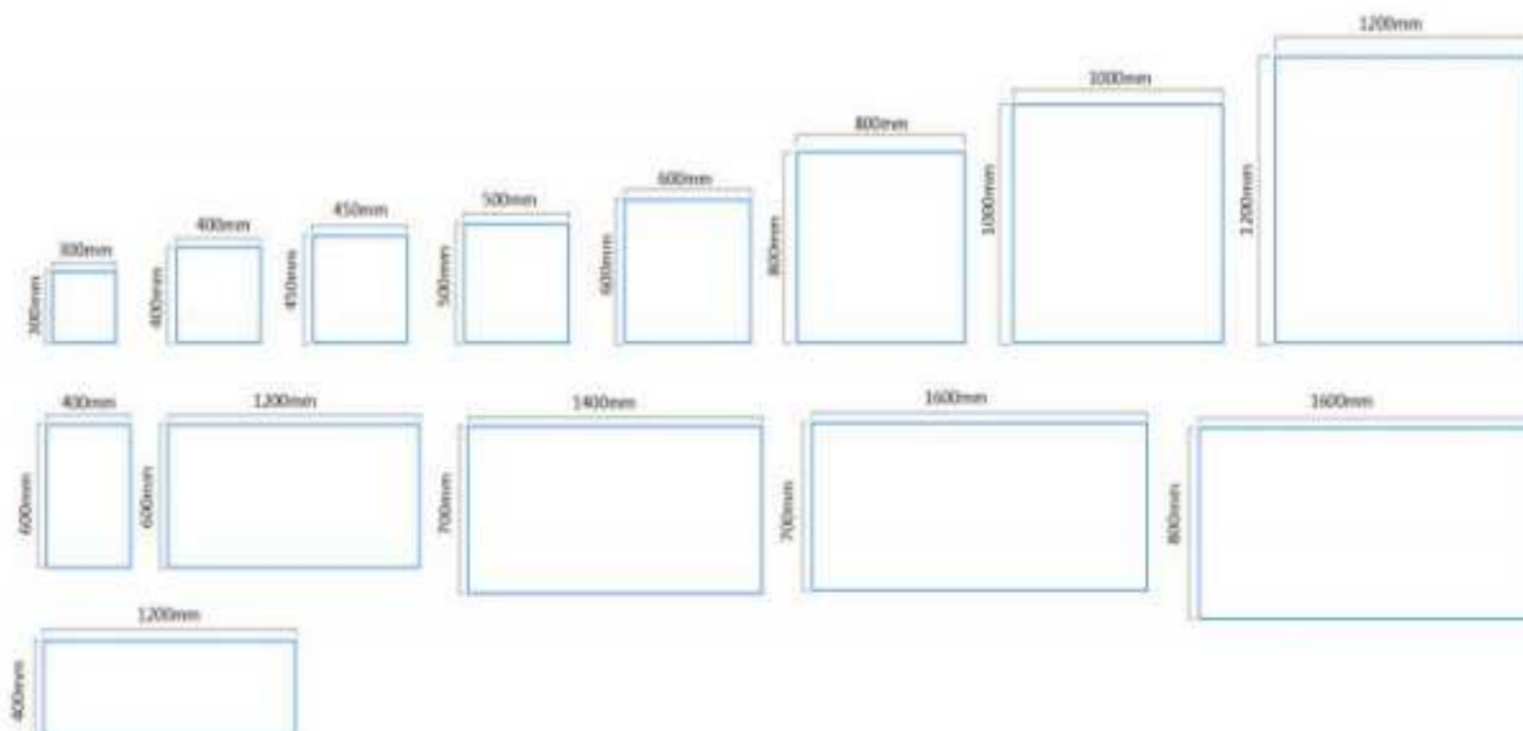
If you have any questions or concerns about our designs or sizes of access Panels, please contact our customer representative for more information.

***“You want the best, We Produce the Best!”***



WE ARE COMMITED TO PROVIDE THE BEST LOCK SYSTEM FOR ACCESS PANEL IN OUR INDUSTRY, WE USE THE CONCEALED MACHNICAL TOUCH LATCH WITH THE SUSTAINABLE QUALITY.

**Access panel with different sizes are avaiable** we can manufacture your custom size upon technical evalaution and Minimum order quantity.



Get your project started: **Order access panels factory-direct!**

# BROOER ACCESS PANAL PUSH UP DOORS

## Virtually Invisible Access Panels

Access Panels provide into drywall walls and ceilings. A number of innovative design features make them virtually invisible and flush in the finished wall and ceiling. The door panel receives the same finish as the surrounding surface and can be removed for full access. Suitable for both new construction and repairs. Panels arrive ready for installation. The best finishes of access in ceiling and in drywall.



**Specifications:**  
 300X300mm, 400X400mm, 450X450mm,  
 500X500mm, 600X600mm, 600X1200mm  
 800X800mm, 1000X800mm, 1000X1000mm  
 1400X700mm or as customer request.

L  
A  
T  
C  
H  
  
O  
P  
T  
I  
O  
N  
S



Touch Latch



Keyed Lock



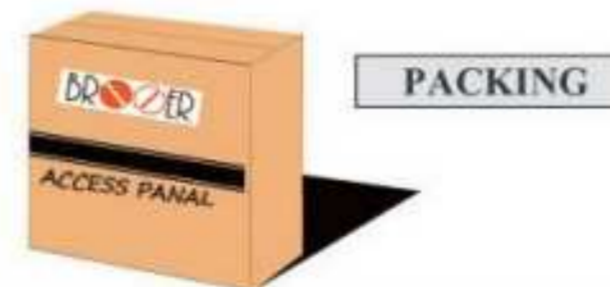
CAM lock

**FEATURES:**

1. Easy installation
2. Widely used
3. Stable quality

**APPLICABLE SCOPE:**

Widely used in government departments, airports, star hotel, hotels, office buildings, villas, shops and other places of household, easy transportation, easy construction, the product is not easy to damage, have fire prevention, environmental protection, etc.



**WITH GYPSUM BOARD**



**WITHOUT GYPSUM BOARD**



**BROOER ACCESS PANEL SIZE CONSULTATION**

**Access Panel with Single Leaf Doors**

Standard sizes from 2" x 2" to 24" x 36"



Custom Sizes in increments of 1/16"



**Single Door custom sizes**

Example of Custom Size 27" x 54", 14½" x 28", 6¼" x 42"

Minimum dimension of length or width is 2". Door sizes can be in increments of 1/16". Larger access panels may need to be manufactured as two leaf doors or more.

**Standard Sizes**

200 x 200 MM
300 x 300 MM
400 x 400 MM
450 x 450 MM
500 x 500 MM
600 x 600 MM
600 x 1200 MM
800 x 800 MM
1000 x 1000 MM
1400 x 700 MM
1600 x 800 MM

**Installation View**



BROOER ACCESS PANAL MULTI-LEAF DOORS

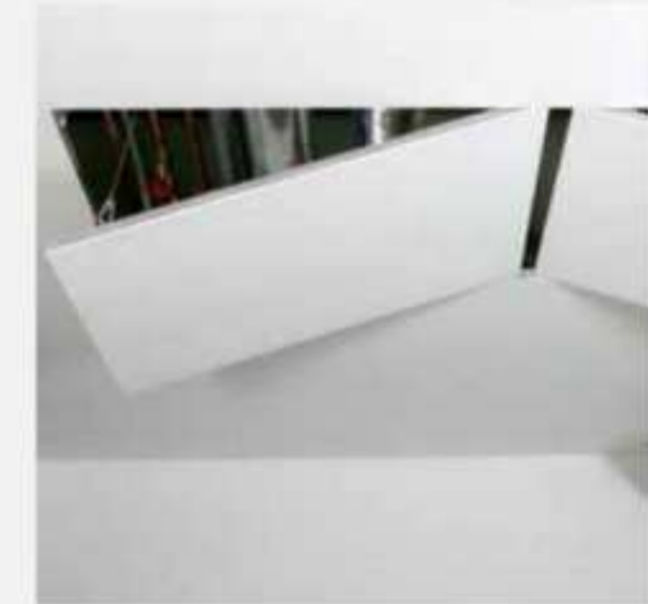
**Access Panel with Multi-leaf Doors**

**Multi Leaf Custom Doors:** Multi leaf access panels shall be used to achieve a Large Clear opening. There are no cross bars required.

**1. Butter Fly Style**



**2. Classic Door Style**



**Multi-leaf Door Custom Sizes:**

1. Multi-leaf doors can be customized to suit most large openings
2. Multiple, hinge less, fully removable sections
3. No Centre Bar
4. Double leaf doors typically hinge in the center
5. Door leaves can be removed for full access

**Examples of custom sizes**  
36" x 80", 32½" x 56", 66" x 78"

**Brooer Access Panels** in Custom size doors can be manufactured as Two-leaf doors in Butterfly and in classic door styles. There are no cross Bars at the centre on either design, just a continuous clear opening.

Note: Clear opening, no cross bar. Size restrictions apply to Class Door style.

## BROOER ACCESS PANEL RANGE

*Virtually Invisible Panel designed for Ceiling and Drywall*

The **Brooer Access Panel** is a gypsum wallboard access panel with concealed hardware that blends seamlessly into your wall or ceiling. Once installed and finished to match the surrounding area, a clean 1/16" reveal is all that remains visible. All elegant and functional surface treatments can be applied. The **Brooer Access Panel** available in a wide range of custom sizes for your different areas conditions.

### **Our range of Access Panels:**

1. **Moisture Rated Access Panel:** Moisture rated access Panel Are made up With Aluminum Frame and Moisture Rated Gypsum plaster Board.
2. **Fire Rated Access Panel:** Moisture rated access Panel are made up with Aluminum Frame and Fire Rated Gypsum plaster Board
3. **Normal Gypsum Board Access Panel:** Moisture rated access Panel are Made up with Aluminum Frame and Normal Gypsum plaster Board



Our designs are Decorous and visually appealing. The panels are easily finished to match surrounding areas - whether with tile, wallpaper, paint or veneer. The **Brooer** Quality of **Access panel** has Become the industry standard for Major Construction Projects.

### FOR IN USE

1. All assemblies clad in gypsum wallboard, 1/2" or 5/8"
2. Wall or ceiling installation
3. New construction or repairs
4. Rough openings in GWB independent of joists/studs
5. Custom size
6. Its applicable to Fire and Non fire Rated Areas

### BENEFITS

1. Virtually invisible access opening
2. 1/16" (2 mm) visible gap
3. Clean, continuous surfaces without visible hardware
4. Variety of finishing options
5. Superior acoustics with gasket and mass of GWB in door
6. Maximum clearance with removable door leaf
7. Custom sizes, custom inlays, and custom hardware

# BROOER ACCESS PANEL CUSTOM SOLUTIONS

## Design Consultation

### Customized inlay Design Option

1. Additional GWB Layers
2. Tile Backer Board
3. Acoustical Inlay Options
4. Cement Board
5. Imperial Veneer Plasterboard
6. Fiberboard (MDF)
7. Preparation Wood Inlay/Veneer
8. White Pvc laminate



### Standard Features

1. Concealed mechanical touch latch
2. Moisture and mold resistant GWB inlay
3. Strong concealed aluminium frame and hardware
4. Removable door leaf with safety cables
5. EPDM rubber perimeter gasket (air and smoke tight)



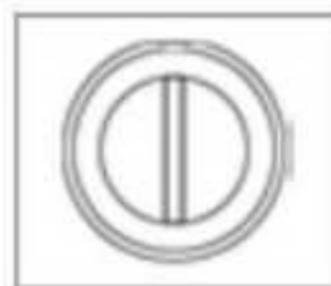
### Latch Options



Touch Latch



Keyed Lock



CAM latch



TORX latch





**IMPERIAL SIZE CHART FOR STANDARD SIZES**

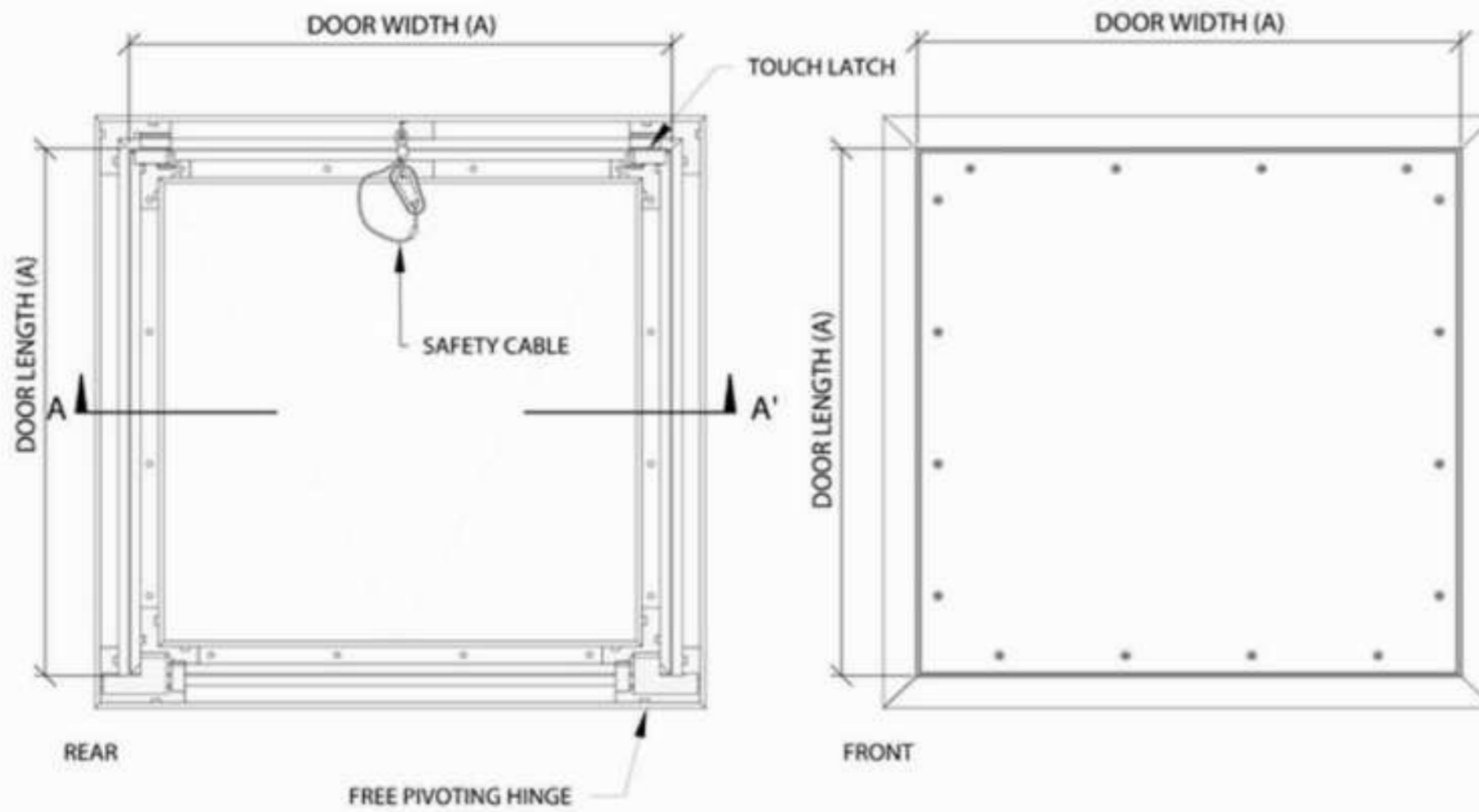
A	B	C
<i>Door Size (A) Width x Length</i>	<i>Cut Opening in GWB (B) Width x Length</i>	<i>Rough Opening (C) Width x Length</i>
6" x 6"	6 3/8" x 6 3/8"	8 1/2" x 8 1/2"
8" x 8"	8 3/8" x 8 3/8"	10 1/2" x 10 1/2"
10" x 10"	10 3/8" x 10 3/8"	12 1/2" x 12 1/2"
12" x 12"	12 3/8" x 12 3/8"	14 1/2" x 14 1/2"
14" x 14"	14 3/8" x 14 3/8"	16 1/2" x 16 1/2"
16" x 16"	16 3/8" x 16 3/8"	18 1/2" x 18 1/2"
18" x 18"	18 3/8" x 18 3/8"	20 1/2" x 20 1/2"
20" x 20"	20 3/8" x 20 3/8"	22 1/2" x 22 1/2"
24" x 24"	24 3/8" x 24 3/8"	26 1/2" x 26 1/2"
24" x 36"	24 3/8" x 36 3/8"	26 1/2" x 38 1/2"
Inside dimensions, opening in door frame	Door size (A) + 3/8"	Door size (A) + 2 1/2" Allows 1/8" play on either side

**METRIC SIZE CHART FOR STANDARD SIZES**

A	B	C
<i>Door Size (A) Width x Length</i>	<i>Cut Opening in GWB (B) Width x Length</i>	<i>Rough Opening (C) Width x Length</i>
152 mm x 152 mm	162 mm x 162 mm	216 mm x 216 mm
203 mm x 203 mm	213 mm x 213 mm	267 mm x 267 mm
254 mm x 254 mm	264 mm x 264 mm	318 mm x 318 mm
305 mm x 305 mm	315 mm x 315 mm	369 mm x 369 mm
356 mm x 356 mm	366 mm x 366 mm	420 mm x 420 mm
406 mm x 406 mm	416 mm x 416 mm	470 mm x 470 mm
457 mm x 457 mm	467 mm x 467 mm	521 mm x 521 mm
508 mm x 508 mm	518 mm x 518 mm	572 mm x 572 mm
610 mm x 610 mm	620 mm x 620 mm	674 mm x 674 mm
610 mm x 914 mm	620 mm x 924 mm	674 mm x 978 mm
Inside dimensions, opening in door frame	Door size (A) + 3/8"	Door size (A) + 2 1/2" Allows 1/8" play on either side

**Note :** Access door sizes are based on inside dimensions, door size (A)

**BROOER ACCESS PANAL SINGLE DOOR WITH LATCH**



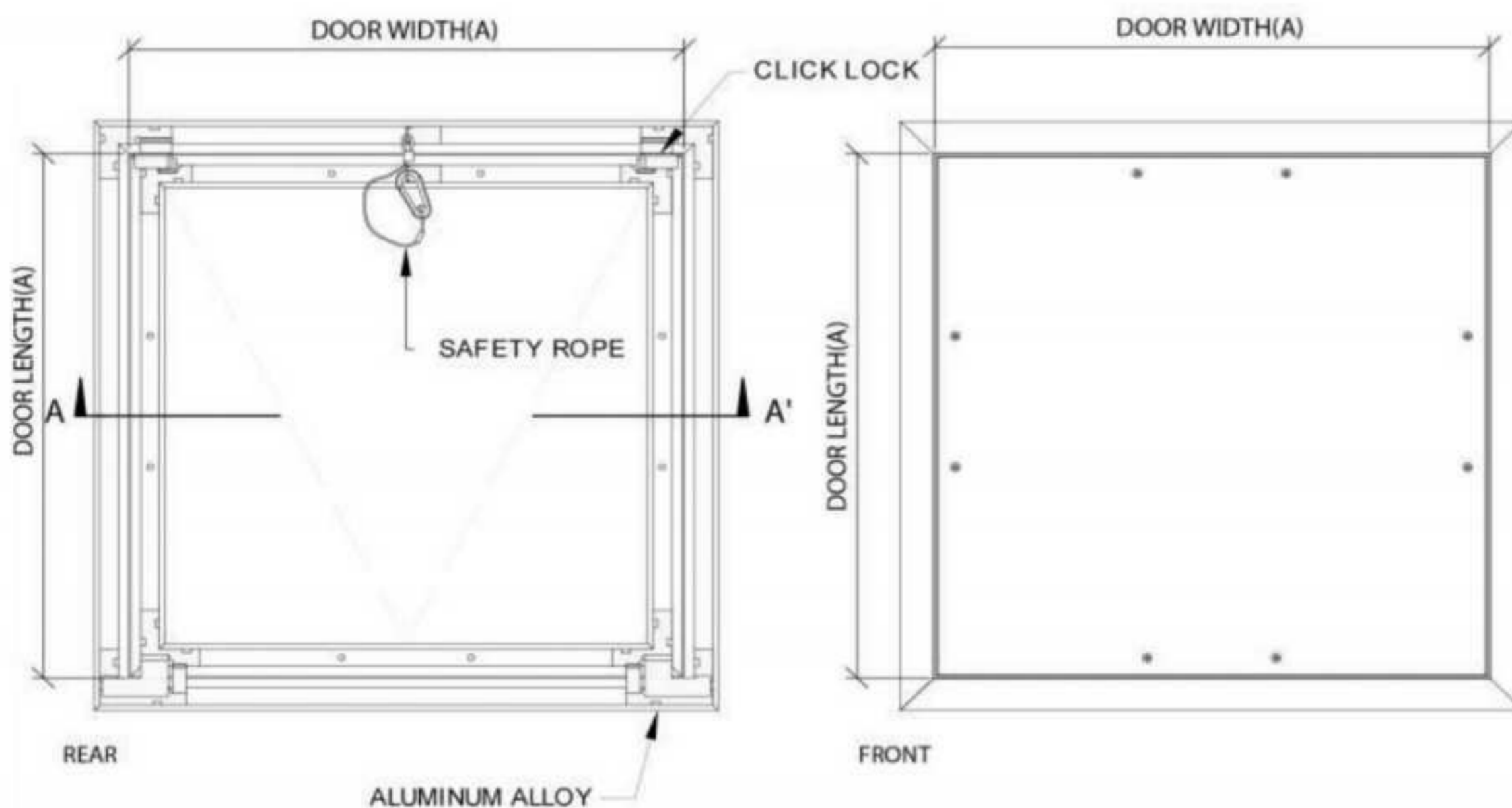
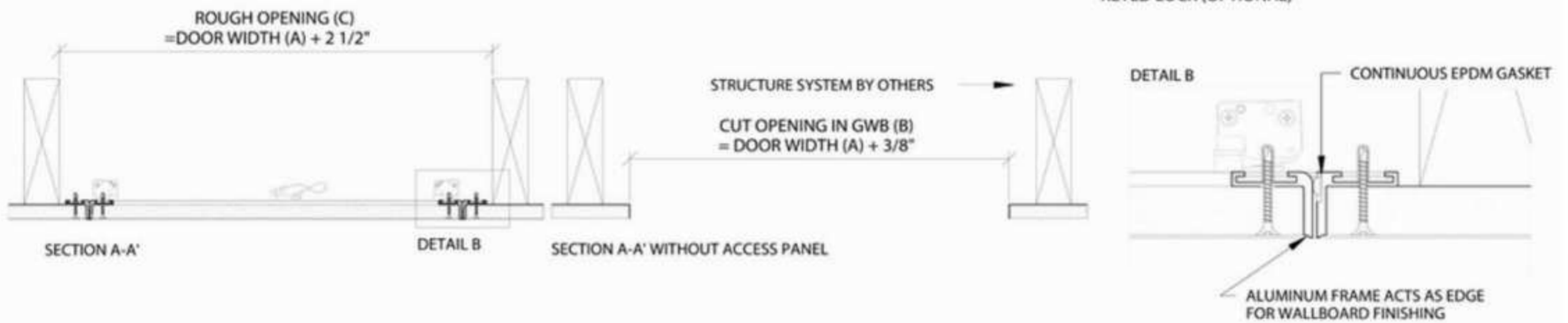
**FOR USE IN:**  
 - ASSEMBLIES CLAD IN GYPSUM WALLBOARD 1/2" (13 mm) OR 5/8" (16 mm)  
 - NEW CONSTRUCTION OR REPAIRS  
 - ROUGH OPENINGS IN GWB WITHOUT ABUTTING STRUCTURES

**FRAME:**  
 - RECESSED ALUMINUM EXTRUSIONS  
 - FRAME ACTS AS FINISHING EDGE  
 - 1/16" (2 mm) GAP BETWEEN FRAME AND DOOR

**STANDARD FEATURES:**  
 - STRONG CONCEALED ALUMINUM FRAME AND HARDWARE  
 - CONCEALED MECHANICAL TOUCH-LATCH  
 - LIFT-OUT DOORS WITH SAFETY CABLES  
 - MOISTURE RESISTANT GWB INLAY  
 - PERIMETER GASKET (AIR & SMOKE TIGHT)

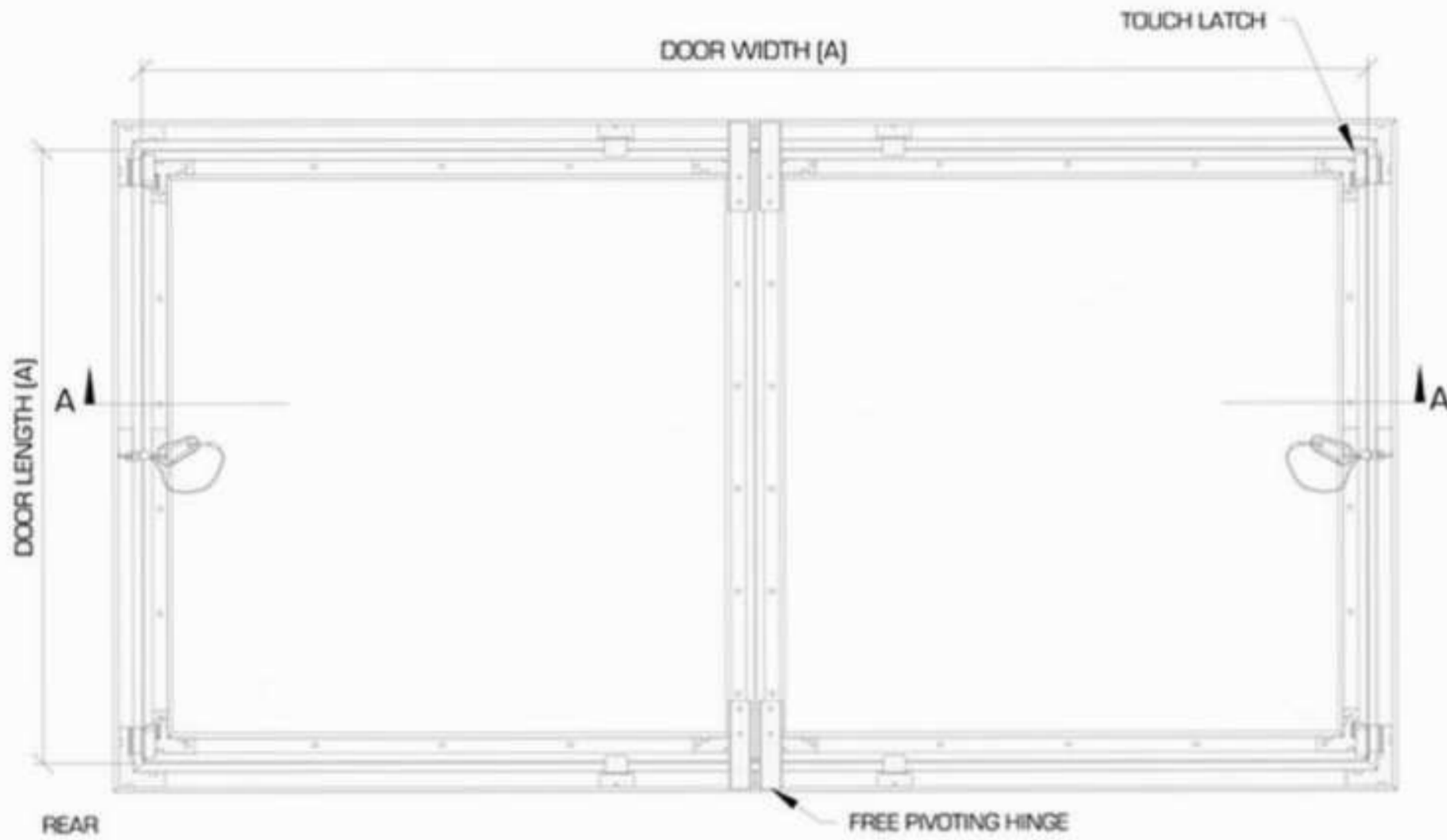
**HINGE:**  
 - FREE PIVOTING HINGE  
 - DOOR CAN BE REMOVED FOR MAXIMUM CLEARANCE

**LATCH:**  
 - CONCEALED TOUCH LATCH (STANDARD)  
 - CAM LATCH (OPTIONAL)  
 - TAMPER RESISTANT CAM LATCH (OPTIONAL)  
 - KEYED LOCK (OPTIONAL)





## BROOER ACCESS PANEL TWO LEAF DOOR WITH LATCH



**FOR USE IN:**

- ASSEMBLIES CLAD IN GYPSUM WALLBOARD 1/2" (13 mm) OR 5/8" (16 mm)
- NEW CONSTRUCTION OR REPAIRS
- ROUGH OPENINGS IN GWB WITHOUT ABUTTING STRUCTURES

**FRAME:**

- RECESSED ALUMINUM EXTRUSIONS
- FRAME ACTS AS FINISHING EDGE
- 1/16" (2 mm) GAP BETWEEN FRAME AND DOOR

**STANDARD FEATURES:**

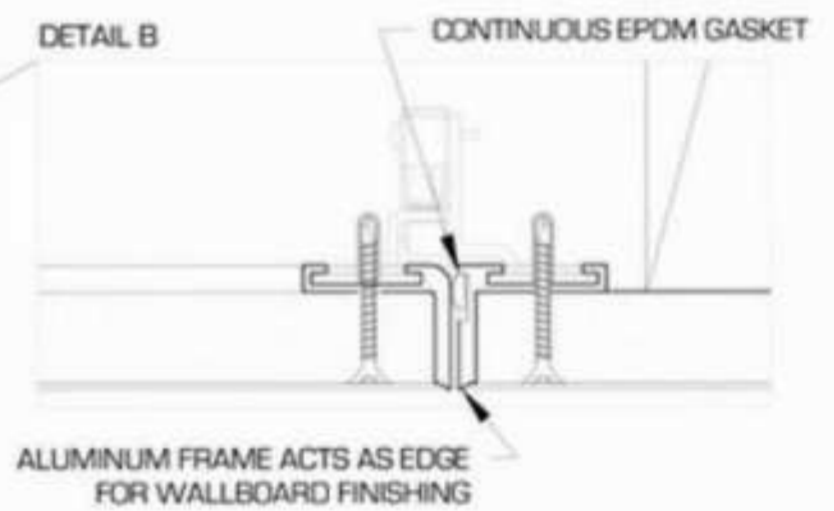
- STRONG CONCEALED ALUMINUM FRAME AND HARDWARE
- CONCEALED MECHANICAL TOUCH-LATCH
- LIFT-OUT DOORS WITH SAFETY CABLES
- MOISTURE RESISTANT GWB INLAY
- PERIMETER GASKET (AIR & SMOKE TIGHT)

**HINGE:**

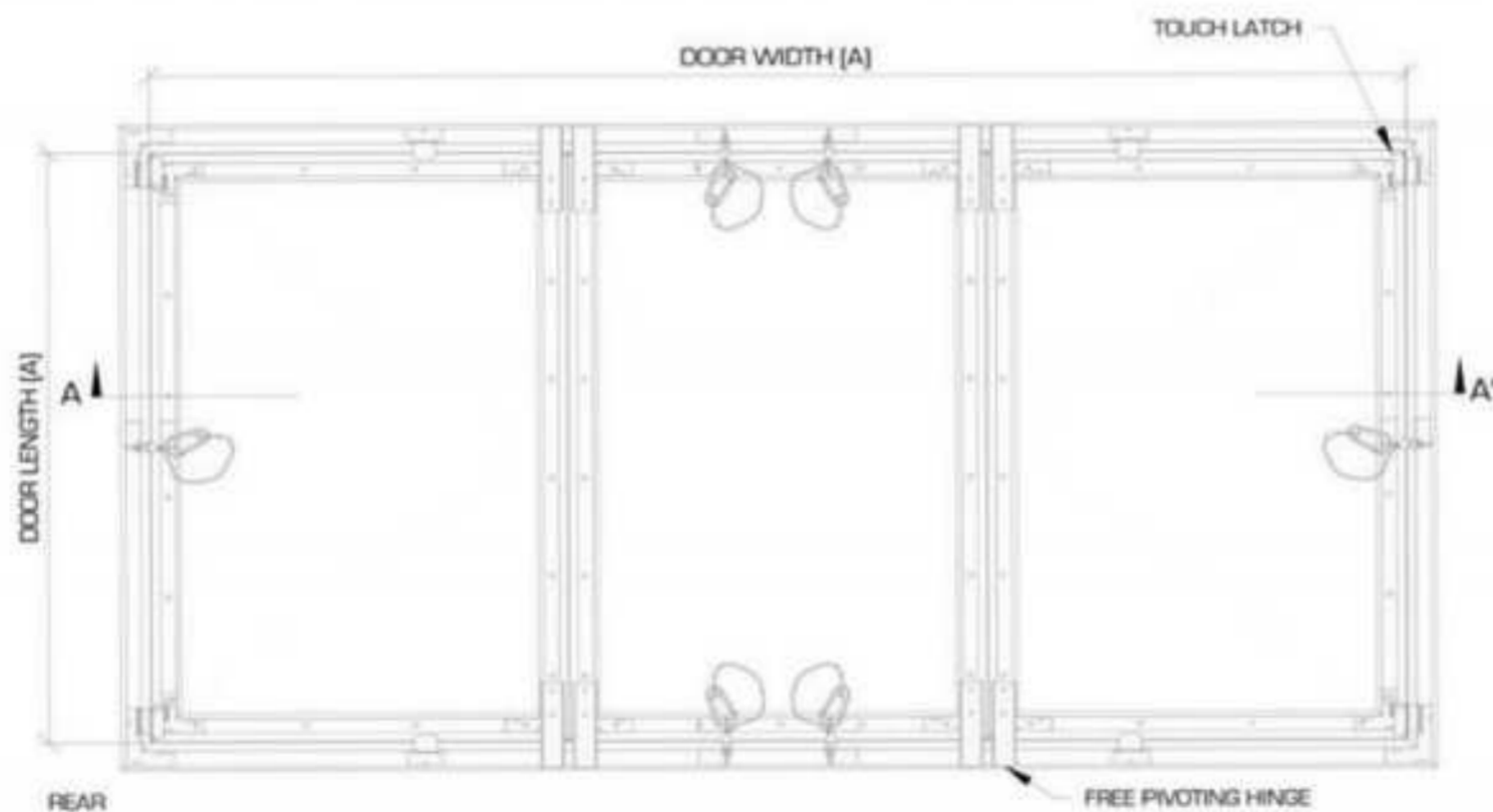
- FREE PIVOTING HINGE
- DOOR CAN BE REMOVED FOR MAXIMUM CLEARANCE

**LATCH:**

- CONCEALED TOUCH LATCH (STANDARD)
- CAM LATCH (OPTIONAL)
- TAMPER RESISTANT CAM LATCH (OPTIONAL)
- KEYED LOCK (OPTIONAL)



## BROOER ACCESS PANEL THREE DOOR WITH LATCH LOCK



**FOR USE IN:**

- ASSEMBLIES CLAD IN GYPSUM WALLBOARD 1/2" (13 mm) OR 5/8" (16 mm)
- NEW CONSTRUCTION OR REPAIRS
- ROUGH OPENINGS IN GWB WITHOUT ABUTTING STRUCTURES

**FRAME:**

- RECESSED ALUMINUM EXTRUSIONS
- FRAME ACTS AS FINISHING EDGE
- 1/16" (2 mm) GAP BETWEEN FRAME AND DOOR

**STANDARD FEATURES:**

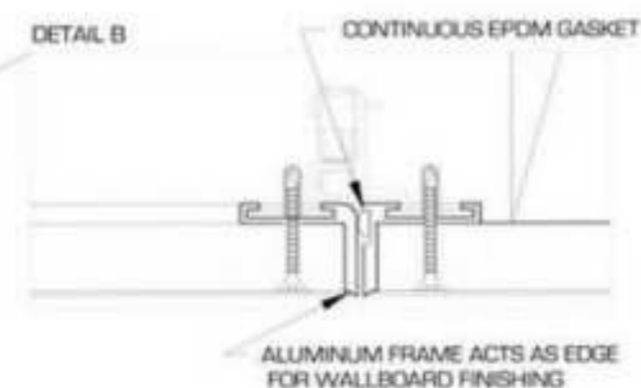
- STRONG CONCEALED ALUMINUM FRAME AND HARDWARE
- CONCEALED MECHANICAL TOUCH-LATCH
- LIFT-OUT DOORS WITH SAFETY CABLES
- MOISTURE RESISTANT GWB INLAY
- PERIMETER GASKET (AIR & SMOKE TIGHT)

**HINGE:**

- FREE PIVOTING HINGE
- DOOR CAN BE REMOVED FOR MAXIMUM CLEARANCE

**LATCH:**

- CONCEALED TOUCH LATCH (STANDARD)
- CAM LATCH (OPTIONAL)
- TAMPER RESISTANT CAM LATCH (OPTIONAL)
- KEYED LOCK (OPTIONAL)

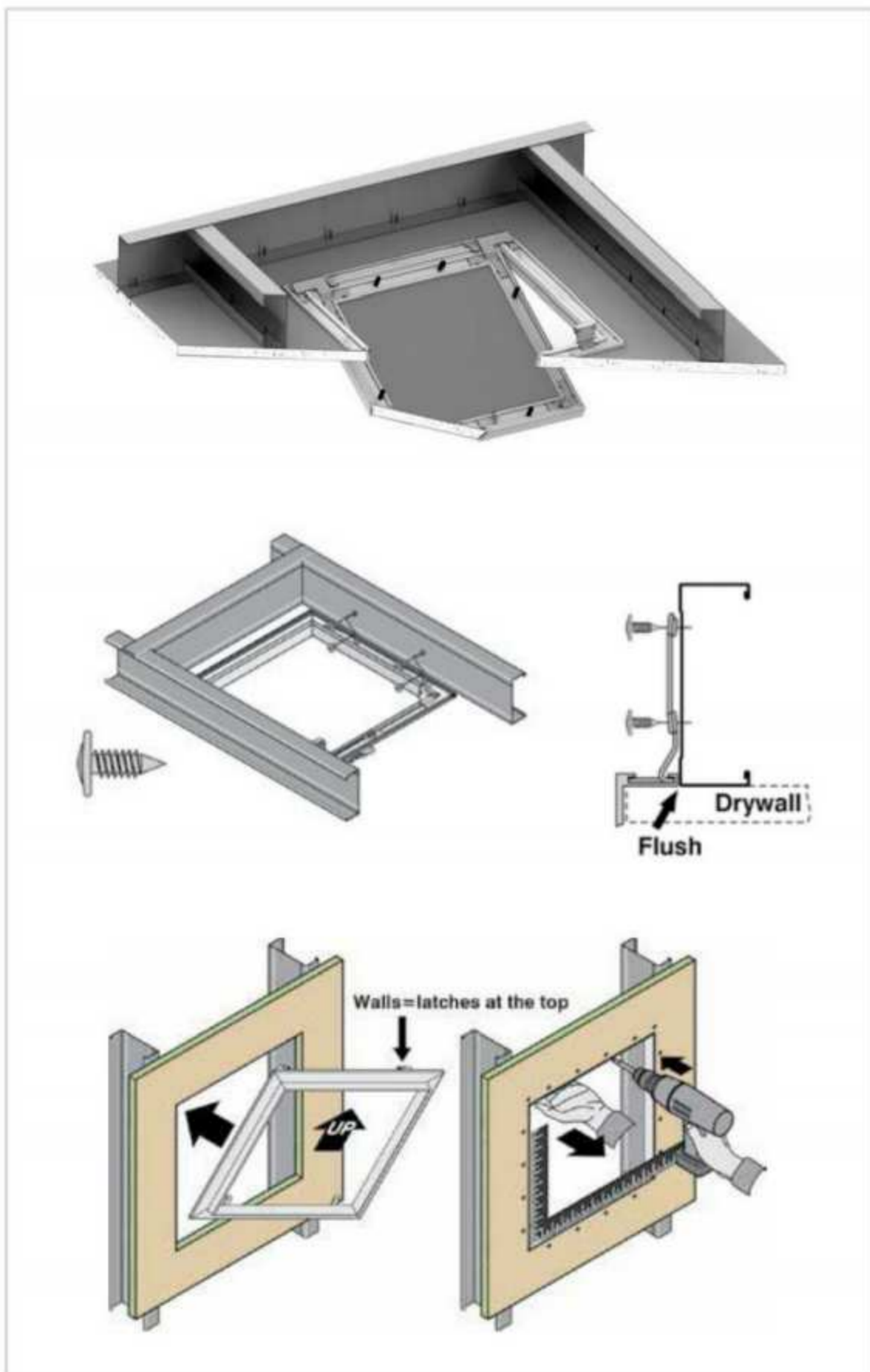


## BROOER ACCESS PANEL INSTALLATION METHOD

### Installation Method

The framing should be placed correctly around the opening in the drywall for the access panel. Drywall is linked to the studs as usual but overlaps to create a lip to bring the access panel outer frame. The cut Opening required for the access panel is cut and the frame angled through the opening and attached according to the information on in the Image.

Ex: For a Model Number 12" x 12" clear opening, the minimum spacing of the framing is 14 1/2" with 1 1/4" on either side of the opening. The maximum spacing is 20" with 4" maximum on either side of the opening. The distance to the studs does not have to be the same as long as the framing is within the maximum and minimum dimensions.



#### Step 1: Locate the Fixture

Whatever needs accessing, make sure you know exactly where it is. Ideally, before you hung the drywall you took accurate measurements of the fixture's location, whether it is a valve, wiring hub or removable pipe cap. That way, when cutting the drywall, you will know precisely where to install the access panel. Otherwise, the process will be somewhat blind. If you cut into the drywall but make a mistake, you will have to patch it. Basically, it is best if you know the precise location of what you need to access.

#### Step 2: Cut a Small Hole in the Drywall

Check your measurements by cutting a small hole into the drywall right at the point the fixture should be. Use the drywall saw. This starter hole will let you know where you should install the access panel.

#### Step 3: Trace the Access Panel Frame

Hold the access panel frame in position against the wall. Make sure it is even and trace along the inside edge. The small hole you first cut should be contained within the traced box.

#### Step 4: Cut Out just Around the Traced Area

Once again, take the drywall saw and cut just outside of the traced area. The lip of the access panel frame requires that the hole be a bit bigger on all four sides to allow it to fit in. The extra size should be no more than 1/4 inch on all sides.

#### Step 5: Fit the Frame

Test out the frame to make sure it fits snugly in the cut-out hole. If it is too tight a fit, take the drywall saw and saw along the edges of the cut to make the hole bigger. Be careful not to make the hole too big, though.

#### Step 6: screw the Frame to Drywall

Screw the Drywall screw to the frame on the drywall edge where access panel is located. With the screw in place, put the frame into the opening and press it against the drywall. Be sure that all sides of the frame contact the drywall equally.

#### Step 7: Finish the Frame

By applying the gypsum plaster on the edge of the opening door Frame through which the cut area of the plaster board can make it more fished and the gap of the frame will be not visible from 1.5 Mtr, after finish the frame

# BROOER ACCESS PANEL INSTALLATIONS INSTRUCTIONS

## Tools Required



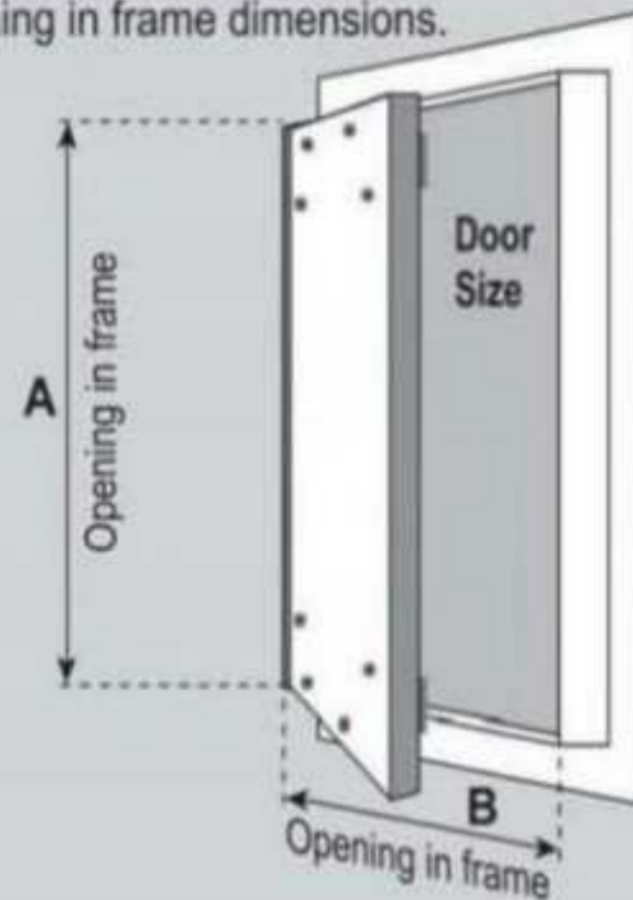
## Measuring and cutting the rough opening:

- 1 Determine the location for the Access Panel and note the position of studs or joists.
- 2 Measure the **inside** dimensions of the frame (not the door). Add  $\frac{3}{8}$ " (9.5mm) to each dimension.

## Frame (shown with hatch open)

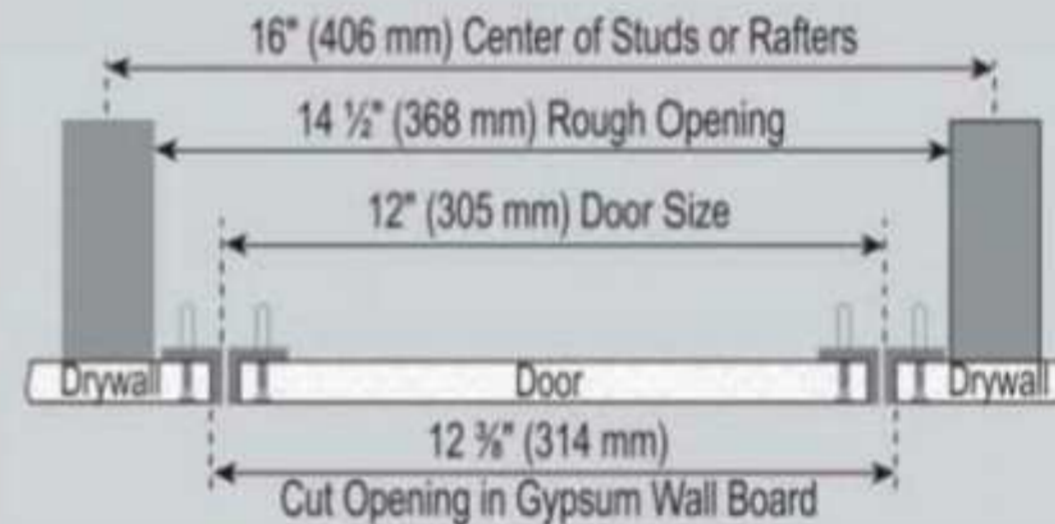
Door Size is opening in frame dimensions.

A and B are the dimensions of opening in the frame

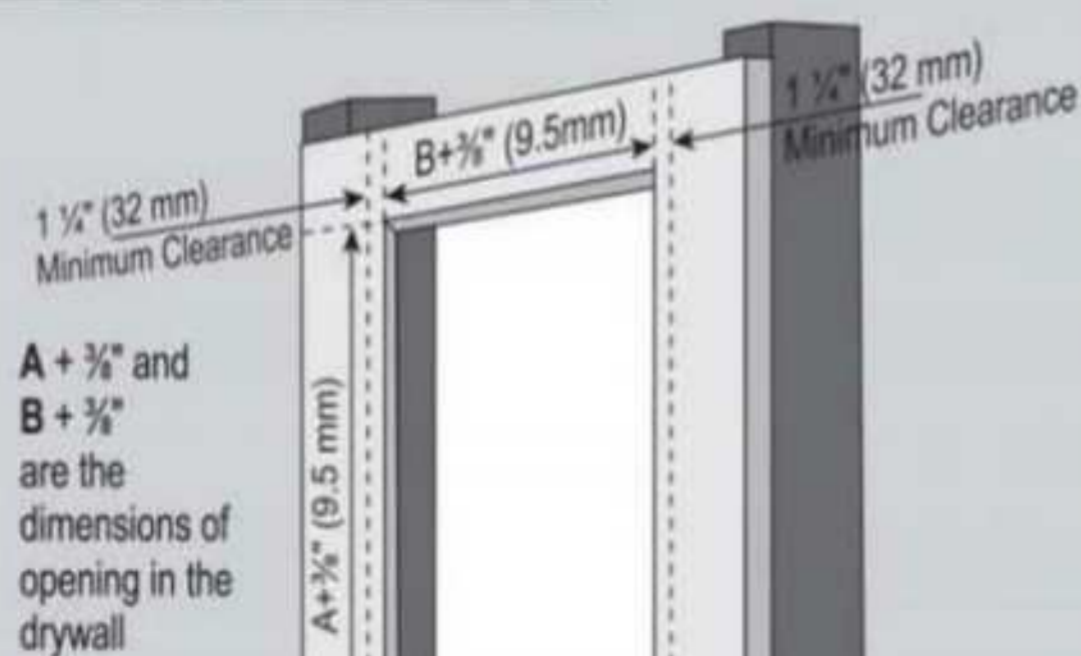


## Standard ceiling and walls -stud or joists at 16" (406 mm) center

The illustration below shows the maximum size of the frame that fits between joists or studs on standard center.

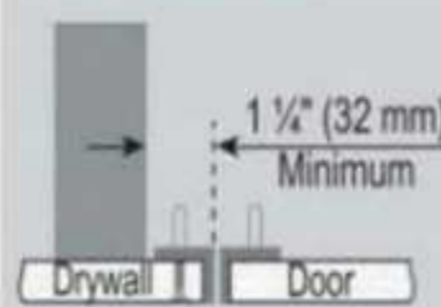


## Opening in gypsum wall board

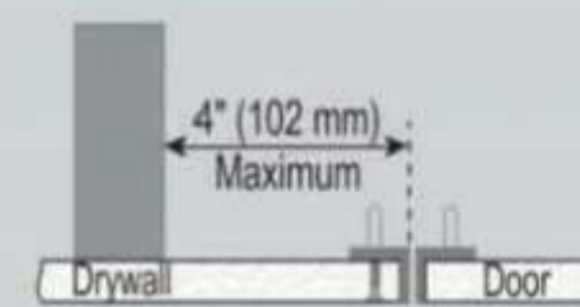


A +  $\frac{3}{8}$ " and B +  $\frac{3}{8}$ " are the dimensions of opening in the drywall

## Minimum clearance to studs from cut opening



## Maximum clearance to studs from cut opening



- 3 Mark a pair of base lines 90° to each other on the ceiling or wall where the hole will be. These must be a **minimum** of 1 1/4" (32 mm) and a **maximum** of 4" (102 mm) away from a stud or joist. Mark the opposite sides using the dimensions in Step 2. Accurate marking is very important and make sure that the lines are square.
- 4 Cut the opening with a knife, saw or drywall cutter. Make sure the edges are clean.

---

**BROOER ACCESS PANEL SPECIFICATIONS**

---

<b>Model Name:</b>	<b>BROOER ACCESS PANEL</b> for Drywall and Ceiling
<b>Description:</b>	<b>BROOER ACCESS PANEL</b> are virtually invisible access panel installs flush with wall and ceiling finishes. Finished panels leave not more than a 1/16" shadow/gap on finished Surfaces. Hardware-free finish, opens with concealed touch latches. May be removed for full access, complete with safety catches. Suitable for new Construction and repairs. Panels arrive ready for installation with factory Installed gypsum board inlay. Door panel receives the same finish as the Surrounding surface. Aluminium extrusion with gypsum board installed, No corrosive hardware, safety devices, installation kit, and bracing where needed. Standard: touch latch. Options: keyed latch, special board, acoustic backing. Panel drywall inlay shall equal the same specifications as wall and Ceilings.
<b>Finishing:</b>	No bead required. Feather mud so that after the 3rd layer no irregularities shall be visible to the unaided eye at a distance of 1.5 m.
<b>Dimensions:</b>	Standard sizes: 3" x 3", 4" x 4", 6" x 6", 8" x 8", 10" x 10", 12" x 12", 14" x 14", 16" x 16", 18" x 18", 20" x 20", 24" x 24", 24" x 36". We can manufacture custom sizes upon technical evaluation and Minimum Order quantity.
<b>Sizing:</b>	For a proper fit, the rough opening has to be 2 1/2" wider and longer than the door size, to a maximum of 8". Cut opening in the gypsum wallboard will be the door size + 3/8".
<b>Properties:</b>	<ol style="list-style-type: none"><li>1. Corners of exterior and interior frames reinforced through non-corrosive galvanized steel angles.</li><li>2. Flap is secured by the galvanized angle on the high side</li><li>3. Open and close by applying pressure on the latch side.</li></ol>
<b>Removable Flap:</b>	<ol style="list-style-type: none"><li>1. Continuous white seal (about 1 mm thick) between frame and flap.</li><li>2. The flap is to be finished co-extensive with surrounding surface.</li></ol>
<b>Additional Feature:</b>	Also available in specialized designs: Rubber Seal, Cylinder Lock, Square Tumbler Lock
<b>Material:</b>	Exterior and interior frames made from stable aluminium profile.
<b>Material crew:</b>	Phosphate, rust-prevented, pike protected with cap, distance max 20 cm from screw to screw.
<b>Aluminum Profile:</b>	ALMGF / 0.5 F22 Connecting Parts: Galvanized steel, 1.5 - 2 mm



# BROOER ACCESS PANEL LEED STATEMENT

*LEED for Brooer Access Panel with Gypsum Board Inlay*

Brooer Metal Industries is comprehensive Enterprice Manufacturing Ceiling and Decoration Material since a 2019 .We are Professional Manufacture of Brooer Acess Panel and Access Doors .Our Factory and Head Office in National Industries Park Jebel Ali Dubai U.A..E. At Brooer Access Panel Solutions ,We are Proud to be the most customer -respnsive Access panel company in intustry.We accomplish this by being both manufacturer and distributer of access panel and access doors which allows us to provide short production lead time custom sizes ,and superior delivery logistic .We are ready to assist in your LEED certication Documentation .

## Manufacturing Location

**National Industries Park Jebel Ali Dubai united Arab Emirates**

## Material Quality

**Brooer Metal Industries is a Proud Member of the Green Building Material Our Products are Tested and Certified by world renowned agencies.**

## Recycling Content

Material content By Weight	Total %	Post-industrial Recycled Content	Post-consumer Recycled Content	Recycled %
Aluminium Extrusion	23%	25%		5.8%
Steel Hardware	7%	50%		3.5%
Gypsum board	70%		21%	14.7%
Total Weight	100%			24%

\* Vendors report recycling content up to 90%, but this figure can vary

The above data refers to a 24" x 24" (610mm x 610mm) panel. Other sizes present a similar distribution.

## Certificates

We are certified with ISO, SGS, SON, and INTEK.

