



Metal Corner Tape

 Metal Corner Tape is high quality paper joint tape strengthened with two corrosion-resistant gvanized steel strips for the finishing of internal and external angles in drywall construction.


Advantages:

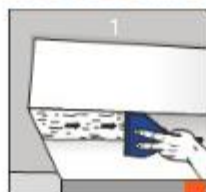
- ✓ Easy to apply
- ✓ Suitable for construction ,repair or alteration work.
- ✓ Flexible steel backing easily fits a wide range of angles
- ✓ Conforms to EN 14353
- ✓ Pin hole perforations for better application and improved bonding
- ✓ Ideal for bulkheads and external corners not subject to impact.

Technical Data:

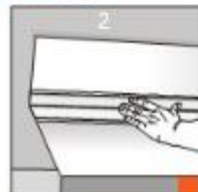
Parameters	Spcification
Width	50 mm
Length	30 mtr
Thickness	0.50mm

Packaging and Storage

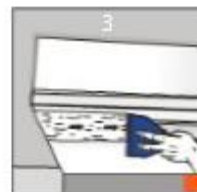
Product	Length	Box
Metal Corner Tape	30 mtr	24 rolls

INSTALLATION GUIDELINES


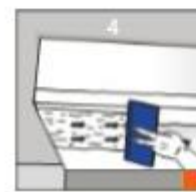
Apply good Jointing Compound with a 100mm tapping knife to both sides of the corner at least 100mm wide and 1-2mm thick ensuring that the paper liner is fully covered with joint compound.



Press **Broer Metal Corner Tape** into position and straighten. Firmly embed corner trim using the tapping knife or roller. Remove any excess compound and allow to dry.




Apply a second coat of good Jointing Compound with a 150mm tapping knife, carefully feathering the compound 150mm out from the nose of the trim. Allow to dry.



Apply a finishing coat of good Jointing Compound to the corner as smoothly as possible with a 200mm finishing knife, feathering out the final coat 200mm from the nose of the trim. Allow to dry. Sand and paint.

Safety recommendations:

- ✓ Product not classified as hazardous.
- ✓ The use of safety gloves is strongly advisable when working with this product, in prevention from physical harm.

 reserves the right to change any of the specifications and technical data mentioned in the Technical Data Sheets at its sole discretion without prior notification.

MAY 2020